

Validated, Real-Time Supply Chain Visibility



REAL-TIME SOLUTIONS

Shipment location & conditions



HYPER-ACCURATE LOCATION

to within meters/feet



BEST GLOBAL COVERAGE

186 countries; high reliability



24/7 LIVE MONITORING

From logistics experts

Tive Solo 5G Trackers

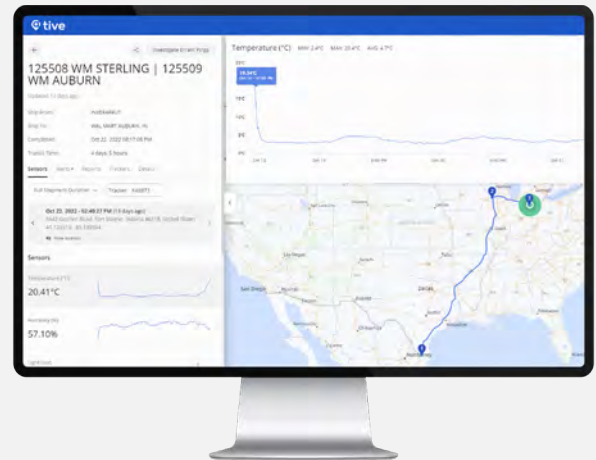
Industry-leading Tive™ Solo 5G trackers capture and transmit hyper-accurate location, temperature, humidity, and light exposure—to help reduce excursions, assure product quality, and improve on-time, in-full deliveries.

The flight-compliant Solo 5G trackers use the latest global Cellular, WiFi, and GPS technology to report real-time sensor data to the Tive cloud platform.

All shipment data is captured in the cloud platform in real time. When things go wrong, you get immediate alerts—enabling you to take quick action to minimize damage.

Tive analytics enables you to analyze historical shipment data to unlock performance insights about shipments, alerts, and carriers—so you can quickly spot growth opportunities, prioritize resources, and make informed decisions that drive your business forward.

Solo 5G trackers have a long battery life, and can be single use or reused to support sustainability initiatives. The Tive solution is fully compliant with ISO 27001:2022.



Tive Solo 5G is available in Lithium (TT-7000) & Non-Lithium (TT-7100)

Designed for these shipments



Cold Chain



Transportation



High-Value



Pharmaceuticals



Food & Beverage

TT-7000 & TT-7100 Specifications



TT-7000 shown actual size



Committed to Sustainability

The Solo Lite can be recycled with Tive's [Green Program](#).

GLOBAL CELLULAR CONNECTIVITY

Transmission Type:

LTE-M Global Bands: B1/B2/B3/B4/B5/B8/B12/B18/B19/B20/B25/B28/B66/B85

EGPRS (2G) Bands: 850/900/1800/1900

Communication Interval:

5 - 720 min, programmable, event-driven immediate communication (excursion, shock)

LOCATION

Location Method:

Cellular, GPS, Wi-Fi Geolocation

Location Accuracy:

Satellite/GPS: 20 m (70 feet)

Wi-Fi Geolocation: 100 m (<200 feet)

Cellular Triangulation: 500 m (0.3 miles)

OPERATING RANGE

TT-7000

-30°C to 60°C (-22°F to 140°F)

TT-7100

-20C to 60C (-4°F to 140°F)

DISPLAY INDICATOR

LED lights indicate Start and Status

SENSORS

Condition Sensors:

Temperature, Humidity, Light, Motion, Shock

Temperature Accuracy:

±0.5°C (±0.9°F)

Drift less than 0.01°C (0.02°F) per year

3-Point NIST® calibration, ISO 17025

Measurement Interval:

5 - 720 min, programmable

Measurement Capacity:

Up to 25,000 records

BATTERY

Solo 5G Lithium Tracker (TT-7000)

Rechargeable Lithium-Ion battery

(3.6 V, 2600 mAh / 9.62 Wh capacity)

Active life: 60+ days (60 min reporting interval)

Shelf life: 180 days

Solo 5G Non-Lithium Tracker (TT-7100)

Rechargeable Nickel-Metal Hydride battery

(2200 mAh, 3.6 V)

Active life: 30+ days (60 min reporting interval)

Shelf life: 12 months

CASE SPECIFICATIONS

Case Material:

UL 94-V0 flame-retardant plastic

Dimensions:

TT-7000

97 x 58 x 21 mm (3.8 x 2.3 x 0.8 in)

TT-7100

107 x 61 x 21 mm (4.2 x 2.4 x 0.8 in)

Weight:

TT-7000

100 g (3.5 oz)

TT-7100

159 g (5.6 oz)

IP Rating:

IP67, fully submersible, waterproof

Mounting:

3M Adhesive, Cable Zip Tie

CERTIFICATIONS

FCC, IC, CE, UKCA, MTC, EAC, ICASA,

CCC, SRRC, NCC, KC, ETA, PTA, SIRIM, Giteki

UN38.3, RTCA DO-160G, flight compliant with

170+ airlines

To learn more about Tive Solo 5G trackers, please contact us on 1300 662 720

Condition Sensors



Temperature



Light



Humidity



Shock



Motion